

# REALVIZ® ReTimer® 2.5

the way to control time

WINDOWS®



©REALVIZ S.A.

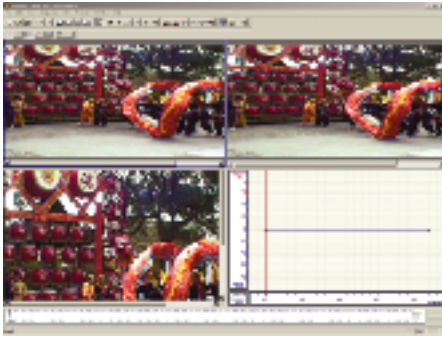
REALVIZ ReTimer is the way to control time for astonishing slow motion or fast motion effects. REALVIZ ReTimer lets you speed up or slow down any video, film, or image sequence, giving you the ultimate flexibility during post-production. With an innovative technology that enables calculation of each pixel move, REALVIZ ReTimer automatically generates new frames in between existing frames, enabling high quality slow downs.



[www.realviz.com](http://www.realviz.com)

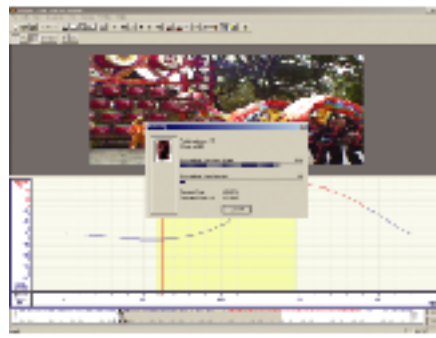
# REALVIZ® ReTimer® 2.5

the way to control time



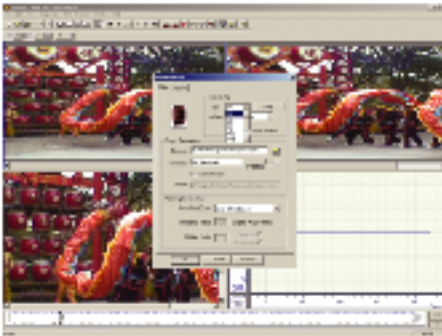
## 1- Load the sequence

The first step is loading a video, a film sequence or a matte sequence.



## 2- Retime the scene

Create new frames between the actual frames.



## 3- Rendering

Just render frames into single sequences.



## 4- Enjoy!!

Export and enjoy the result done with REALVIZ ReTimer.

## Control

- Mattes
- Motion vector control
- Manual or automatic pixel tracking correction
- New ruler tool for accurate pixel motion measurement
- Can slow down and speed up sequences in the same project

## Time

- Speed up or slow down any footage to up to 1000%
- Better management of interlaced sequences
- Add motion blur to 2D and 3D images
- Constant or variable retiming factor
- Edit and manipulate frame creation prior to sequence rendering saves time

## Performance

- Render certain frames or entire sequence
- New multiprocessing support
- New memory management
- New preview option saves time before final rendering

## Import formats

- AVI (\*.avi)
- Cineon (\*.cin)
- JPEG (\*.jpg; \*.jpeg)
- PIC (\*.pic)
- PNG (\*.png)
- PPM (\*.ppm)
- SGI (\*.sgi; \*.rgb)
- TGA (\*.tga)
- TIFF (\*.tif)

## Export formats

- AVI (\*.avi)
- Cineon (\*.cin)
- JPEG (\*.jpg; \*.jpeg)
- PIC (\*.pic)
- PNG (\*.png)
- PPM (\*.ppm)
- SGI (\*.sgi; \*.rgb)
- TGA (\*.tga)
- TIFF (\*.tif)

## Minimum System Requirements

Windows® NT 4.0 SP3 or 2000 SP2  
Batch executables run on Irix 6.5 and Linux 7.2

- Intel® Pentium® III or equivalent. Optimized for bi-processors and Pentium® 4
- 1024 x 768 24-bit display
- 128 MB RAM for TV footage, 512 MB RAM for film footage
- 300 MB free disk space

REALVIZ S.A.  
Arep Center  
1 traverse des Brucs  
Sophia Antipolis  
06560 VALBONNE  
FRANCE

phone +33 (0)4 92 38 84 60  
fax +33 (0)4 92 38 84 61  
email info@realviz.com  
email sales@realviz.com

REALVIZ Corp.  
350 Townsend Street  
San Francisco, CA 94107  
USA  
phone +1 415 615 9800  
fax +1 415 615 9805  
email realviz.usa@realviz.com

